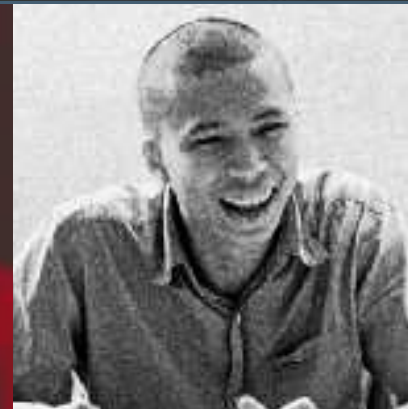


ASHBOURNE

Independent Sixth Form College Kensington



/// Ashbourne Independent College provides an outstanding quality of education and meets its aims effectively ///

November 2010, OFSTED

2012 - 2013



Principal

MICHAEL KIRBY

MSc (London), BApSc (Toronto)

Mike founded Ashbourne College in 1981 and has since presided over its continuing academic development and growth in reputation.

Educated at the Universities of Toronto and London, where he read Aerospace Engineering and Statistics, Mike is a key figure in the promotion of independent education in the UK through bodies such as the Council for Independent Further Education (CIFE). For several years he has been part of the Admissions Panel for Medicine at UCL as a lay member.

Ashbourne is a private, co-educational college for A level, GCSE and preparation for university. Located in one of London's most beautiful areas, it is situated in a quiet street near Kensington Palace and offers spectacular opportunities to explore the myriad cultural attractions of this great city.

It is a college for students who value the best academic traditions of independent education, but are looking for a radically fresh approach. Ashbourne respects individuality and independence and offers its students the unrestricted freedom to choose from a vast array of interesting and stimulating subjects. With classes only exceptionally exceeding 10, we stress the importance placed on individual attention. Relations with staff are uncomplicated, informal and often inspiring.

Ashbourne believes that high expectations lead to excellent exam results and fulfilled potential.

ASHBOURNE COLLEGE





KATHARINE LEA-ROBBINS

*Media Studies, English Language, Drama, Geography,
Religious Studies*

"I can't thank the teachers enough for helping me achieve my grades. I have made many lifelong friends here at Ashbourne and love the relaxed atmosphere. The small classes and intense exam revision all help you feel confident that you will succeed."

After completing 5 AS levels, Katharine achieved A,B,C in English Language, Media Studies and RE and is now studying Film and Media at the University of Leeds.

Senior Management Team	6 – 7	Accommodation	22
Teaching	8 – 9	Beyond the Classroom	23 – 25
Individual Attention	10 – 11	The Future of Education	26 – 27
In Focus		Admissions, A Level Courses	28
Economics, Business Studies, Accounting, Law	12	GCSE Courses	29
Science, Maths, Further Maths, Computing	13	Subjects, Fees, Term Dates	30 – 31
Graphic Design, Photography, Fine Art, Fashion	14 – 15	Ashbourne Staff	32 – 33
Humanities	16	Accreditation	34
Drama, Theatre Studies and Music	17	Results	35
University Entrance			
An Overview	18		
Oxford, Cambridge, Medical School Entrance	19		
Location, Facilities	20 – 21		

SENIOR MANAGEMENT TEAM



Director of Studies

JOHN WILSON

BA (Hons), MA (Oxford), PGCE (Cambridge)

John was educated at The Queen's College, Oxford and Homerton College, Cambridge. He joined Ashbourne in 2000 as a Biology and Science teacher and is now in his second spell with us, rejoining as Director of Studies in 2005. John is a member of the Institute of Biology and has recently joined the Admissions Panel for Medicine at UCL as a lay member.



Director of Operations

LEE KIRBY

After living and working abroad, Lee has been instrumental in the construction of the college's information systems and databases and is now an inspiring leader of operations and administration at the college. A qualified FA coach, he is passionate about football and has played semi-professionally and professionally in the UK and Vietnam respectively. A former director of an entertainment company, he continues to contribute to our annual talent show, the Ashbourne Revue.



Assistant Director of Studies

BREANNE GRANTHAM

BA Hons, Bed (Queen's University, Canada), MA (York), Diplôme Annuel (Université de la Sorbonne, Paris)

Breanne was educated at Queen's University, Canada and the Sorbonne University in Paris, and holds a Master's degree in English from the University of York. She joined Ashbourne in 2005 as Head of GCSE and is a specialist in English Language and Semiotics. Together with James Wykes, she mentors the production of our college newspaper.



Assistant Director of Studies

JAMES WYKES

BA Hons (Wales), MA (Birkbeck), PGCE (King's College London)

Since joining Ashbourne, James has made an outstanding contribution as both Head of GCSE and Head of Drama. He is passionate about learning and plays a key role in the integration of English and Drama. Together with Breanne Grantham, he inspired students to produce our first college newspaper and is now one of the driving forces behind our enrichment programme for gifted students.



CALUM WITNEY

Drama, German, English Language

"When I first joined Ashbourne College in January, I arrived from a school with a very traditional background (in fact it was founded by Henry VIII) which I found to be a little archaic. Ashbourne was a breath of fresh air for me. I found that I worked harder and, whilst Ashbourne's teachers were always demanding, they allowed for self-motivation. In my experience I am less inclined to do something with the crack of a slaver's whip behind me.

That said, Ashbourne expects its students to work hard, and the atmosphere at the college encourages work and study. Intertwined with this is a deep and friendly rapport with the teaching staff that I believe could not be compared to any college in the country. It is safe to say that Ashbourne is a superb college with fantastically dedicated staff who are only too happy to sit down with you and talk about any of your interests or concerns."

Calum achieved A, B, B in his A levels and, against stiff competition, won a place for Drama at the London University of the Arts, St Martin's.

High Expectations

Engagement

Engagement, interaction, and communication are fundamental to understanding Ashbourne's success. Class sizes are strictly limited to 10 and exceed this number only in exceptional circumstances. The average is 7. This enables an outstanding degree of personal attention, allowing teachers to deal with the needs of each student and ensures an animated and productive atmosphere.

Interaction

A key to the process of education is feedback. Our teachers are able to set and mark much more homework because class sizes are small and teaching time significantly exceeds what is found in most other schools or colleges.

Supervised Structured Work

In class students are constantly engaged: for example, reviewing homework, asking questions or working on supervised assignments. Progress through any syllabus is energetic but never stressful.

Exam Confidence

This supervised classwork includes formal mock exams every half term. Past examination questions provide a focus for all tuition. This preparation means that students can approach exams in a relaxed and confident manner.

Subject Choice, Flexibility

Ashbourne offers its A level students a plethora of subjects from which to choose, virtually without restriction. Students are excited and motivated by this freedom to create their own unique timetable.

The diversity of timetables provides many opportunities for encounters between students with different interests and personalities. This promotes harmony as well as performance.



VICTORIA YARAMENKO

Economics A, English Literature A, Mathematics B

From the Ukraine by way of Repton School, Vikki joined us to complete her A2 year. She distinguished herself academically and, having taken a gap year to explore opportunities in Finance and Shipping, is now at the University of Bristol reading Economics.

A Personal Approach

Personal Tutors

The Director of Studies leads a team of Personal Tutors. Each week students meet their Personal Tutor who acts as their guide, counsellor and motivator and is the liaison between students, parents and teachers.

Guidance

The Personal Tutors encourage the development of independence, confidence and ambition. As counsellors they are crucial to making a confident application to university and spend much time individually with their appointed students.

Communication

Teachers write reports for each of their students five times each year but, more importantly, report any concerns immediately to our Director of Studies. These reports include comments on homework completion, grades, attendance, effort, ability, punctuality and participation.

Discipline

The high expectation we have for both staff and students has produced excellent exam results. We insist that all assigned work is submitted and, together with our Personal Tutors, the Director of Studies aims to supervise the completion of any outstanding work.



Economics, Business Studies, Accounting, Law

In today's global economy, knowledge of finance, markets or statistics is increasingly important to students who wish to pursue careers relating to banking, accountancy or fund management.

The strength of this department derives from the multi-faceted background and experience of its staff. As well as outstanding academic achievements, this includes experience in Fund Management and Venture Capital, Chartered Accountancy and Law.

Many of Ashbourne's students have gone on to read Economics, Business or Finance at:

London School of Economics
City University
University College, London
King's College, London
Warwick University
Cambridge University
Oxford University



Teacher of Business and Geography

JERRY EVANS

BSc Hons (Aberystwyth), FSI (City)

Before joining Ashbourne as teacher of Business and Geography, Jerry was a fund manager in the City and a Director of the School of Business Management at the University of Wales. Jerry is passionate about both of his subjects, in particular the relation between Economics and the environment.



UTKU ALHUN

Biology A, Chemistry A, Mathematics A, Physics A

Joining us from Cyprus by way of the United States, Utku was a truly outstanding student, completing four A levels in one year of study. He is now studying Medicine at UCL.

"What sets Ashbourne apart is the high degree of flexibility it offers in helping the students shape their own futures. In a close-knit community that values and encourages diversity, it fosters academic and social self-development, making the transition to university life seem effortlessly smooth. I cannot overemphasise how instrumental Ashbourne was in helping me realise my aspirations."

Science, Mathematics, Further Mathematics, Computing

"Science may set limits to knowledge, but should not set limits to imagination."

Bertrand Russell (1872 – 1970)

Having begun over 25 years ago as a specialist college in Mathematics, Science and Economics, Ashbourne has a long tradition of success in the science subjects.

Almost one quarter of our mathematicians study Further Mathematics in which our record has been outstanding. In Further Maths over the past three years, 68% of exams were awarded a grade A*, A or B.



Graphic Design, Photography

YULIYA LIBKINBA

Japanese A, Graphic Design B, Photography B

Coming to us from the Ukraine, Yuliya is currently studying Graphic Design at the London College of Fashion.



Fine Art, Fashion

Art School Entrance

Ashbourne's outstanding reputation in the Fine and Applied Arts has resulted in many successful applications to the leading art schools. Students benefit from the detailed and specialist advice offered by our Art Department on portfolio presentation and the exposure to a wide variety of artistic media.



ELISHA MANSUROGLU

Drama A, English Literature A, Media Studies A

Joining us from the Sylvia Young Theatre School, Elisha was awarded one of our few drama scholarships. She more than fulfilled our expectations, achieving A, A, A at A level, and is currently studying Drama at the University of Manchester.

"Ashbourne has excellent facilities and location. Its staff are always friendly and supportive. They are never too busy to help and ensure that each student achieves their full potential."

Humanities

In the Humanities, there is depth and excellence across a vast range of subjects from which, in general, students may choose freely.

- | | | | |
|--------------------|----------------|----------|-------------------------|
| English Literature | History of Art | French | Drama & Theatre Studies |
| Geography | Latin | German | Music |
| History | Classics | Italian | Film Studies |
| Politics | | Japanese | Media Studies |
| | | Spanish | Philosophy |
| | | | Psychology |
| | | | Religious Studies |
| | | | Sociology |

English Literature and Drama

We are extremely proud of our performance in all of our subjects but would like to highlight the exceptional achievement in these disciplines. Over the past three years 53% of our results have been at A*/A and 84% at A*/A//B.



Performing Arts

A student's time is divided between classroom lessons and practical theatre sessions, including six visits to the theatre each year. Thus we combine academic rigour with the practical and creative demands of the course. Exceptionally in Drama, practical workshops are deliberately limited to 5/6 students; this enables us to give our students the direction, energy and commitment that they deserve.

Auditions

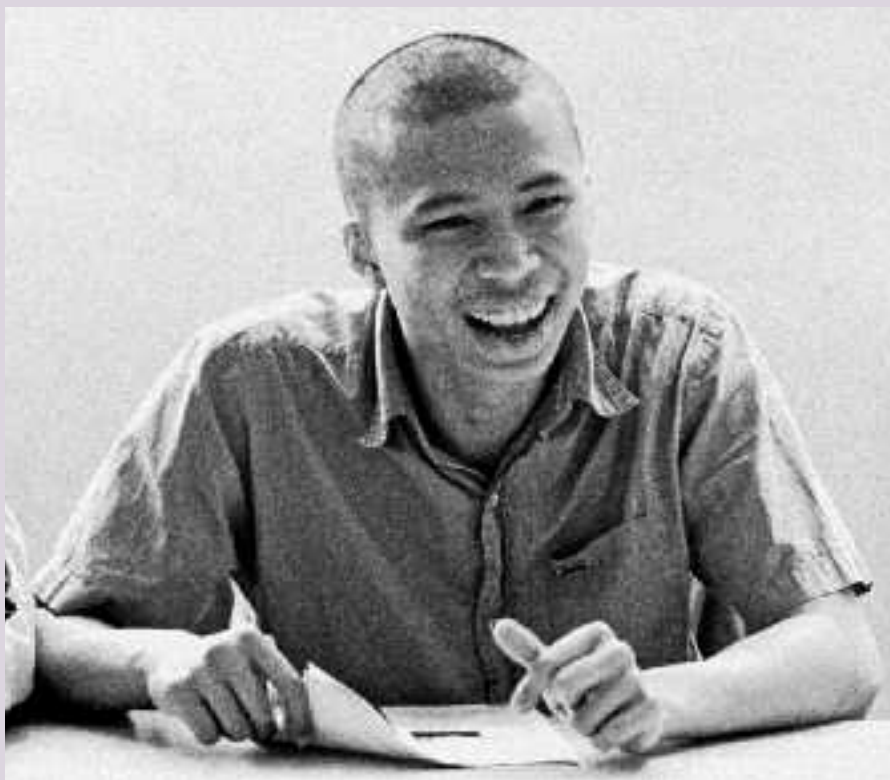
The college hosts an annual audition for entry and scholarships. Each student is asked to prepare a monologue of their own choosing and also, together with two or three other students, perform an excerpt from a piece chosen by the college.

Ashbourne Revue

The drama department has a key role to play with the Revue at Christmas time each year. The Revue includes Dance, Drama, Music and Fashion and involves over 50 per cent of the student body.

Music

With a Choir, Music Club and an Annual Revue of over 10 years standing, Music has always been a vital element at Ashbourne. It will be offered as a full-time subject from September 2012.



An Overview

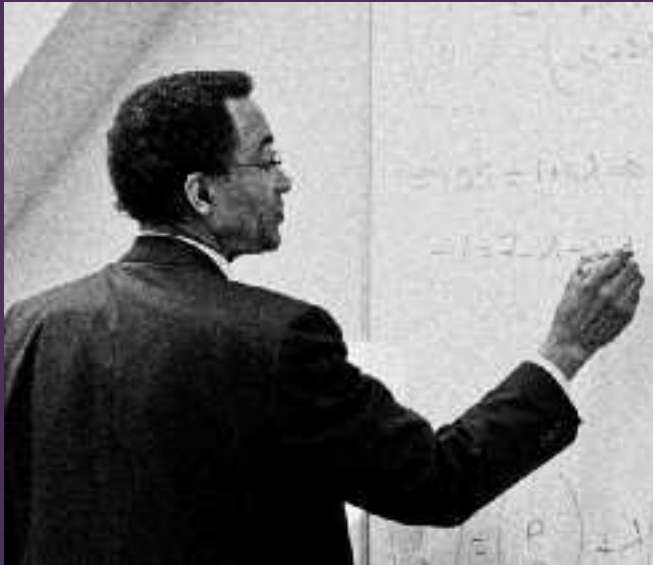
Helping students make a confident application to university is one of the strengths of our Personal Tutor system. Although many go on to the UK's most prestigious institutions such as Oxford, Cambridge, LSE, UCL and Imperial College, our first concern is to understand each student's abilities and aspirations. We then hope to guide and encourage students towards universities with appropriate locations, courses and levels of entry.

DUC THONG NGUYEN

Computer Science A, Further Maths A, Maths A, Physics A

One of many outstanding Vietnamese scholars, Thong gained nine perfect scores out of twelve modules in Maths and Further Maths, and won a scholarship to Gonville and Caius College, Cambridge, where he studied Civil Engineering.

"Choosing to study at Ashbourne was one of my best decisions because I was so well cared for both academically and personally. This was especially true in preparing for my interview at Cambridge, where I received a lot of help from my Personal Tutor."



Teacher of Mathematics, Further Mathematics and Physics

DR BARRY RHULE

BSc (CNAAB), PhD (London)

"To be informed is to be empowered, but to be educated is to be enlightened."

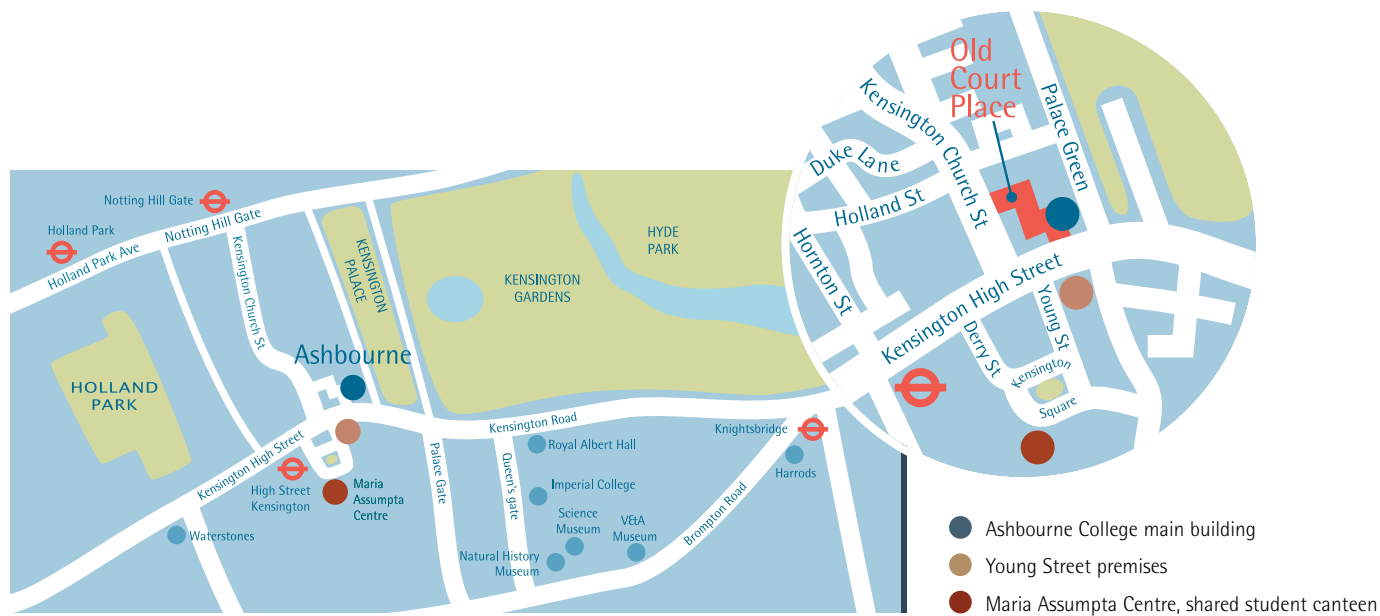
Oxford, Cambridge, Medical School Entrance

Ashbourne's specialist programme for applicants to Oxford, Cambridge, Medicine and other demanding courses and universities, builds on many years of impressive results. Students are prepared for the BMAT, UKCAT, and LNAT tests set by Oxford, Cambridge and Imperial College among others.

Ashbourne is fortunate to be able to draw on the experience of Dr John Foreman who conducts mock interviews for our prospective candidates in the Autumn term. Dr Foreman is a Fellow of the Royal College of Physicians (FRCP) and a former Professor of Pharmacology and Dean of Students at University College London (UCL).

Director of Studies, John Wilson and Principal, Mike Kirby are lay members of the Admissions Panel for Medicine at UCL.





Ashbourne is fortunate to have a wonderful location in a quiet street close to Kensington Palace and Hyde Park. It benefits from this beautiful natural setting as well as the easy access to such monuments as the Royal Albert Hall and the Victoria and Albert Museum. Many of our students live in nearby hostels or homestays.

Ashbourne's main building at Old Court Place is fully equipped for A level study. There is wireless, broadband Internet access throughout the college and a full range of learning resources including the near universal provision of interactive boards. There are specialist laboratories for the teaching of Science subjects and ICT, and each teacher is provided with their own laptop to exploit fully the power of digital media.

The Media and Film room contains digital video and audio facilities for recording and editing, using state-of-the-art iMacs. These facilities enable students to work on creative publishing, graphic design and computer animation projects.

Visual Arts and the GCSE department are housed at our building in Young Street, two minutes' walk from Old Court Place. There are studios for Fine Art and Fashion, Graphic Design and Photography, including a dark room and processing area.

ACCOMMODATION



Our Accommodation Officer endeavours to ensure that students requiring accommodation during their time at Ashbourne have a 'home from home' most appropriate to their individual requirements. Essentially there are two types of accommodation from which to choose:

- Student hostels
- Boarding with an approved family

The College has long-established relationships with several local student hostels. Most are situated in quiet, residential neighbourhoods with wardens on hand 24 hours a day. In most cases, two students will share a room, although single rooms are available for those booking well in advance. Rooms are generally equipped with a desk, chair, study-lamp and generous wardrobe space. Laundry facilities are usually provided, as well as breakfast and evening meals. Wherever they live, London offers students a diverse range of eating establishments, catering for every taste and budget.

Homestays will appeal to those who wish to experience family life. All accommodation is fully inspected before it is offered to students and is within walking distance or an easy journey by bus or train from Ashbourne.

Cultural Visit to Europe

Every year, the College visits a major European city during the Spring half-term, enhancing students' appreciation of the European cultural heritage of art, architecture, music and drama. In recent years, the college has visited Rome, Amsterdam, Barcelona and Madrid.

Special Events

- Tour of London for new students
- Opera - La Traviata
- Musical - Les Miserables
- Musical - Wicked
- Go Karting
- Opera - Tosca
- Old Trafford - Manchester United match
- Ice skating
- Playstation competition
- Maths competition



BEYOND THE CLASSROOM



Extra Curricular Activities

Extra Curricular Activities have always been an integral part of the Ashbourne ethos, providing a platform for the varied talents and interests of the college's vibrant student body. Last year, the activities programme expanded to feature numerous additional clubs, trips, and social events.

- Choir
- Chess club
- Debating club
- Book club
- Latin club
- The Ashbourne newspaper
- Spanish club
- Rambling society
- Japanese club
- Art society
- 5-a-side football
- Food society
- Fashion club
- Flamenco dancing
- Bollywood dancing
- Tango and salsa
- Drama club
- Critical theory seminars
- Knit and Chill



Ashbourne Revue

The Annual Revue is a highlight of Ashbourne's year, with our students working together to produce a varied and exciting programme of dance, drama, music and fashion.

Technology at Ashbourne

Ashbourne is committed to promoting the use of innovative and accessible new technologies to organise, manage and deliver the learning experiences and outcomes of their students.

Centred around the near universal provision of interactive boards, the range of tools includes subject blogs which collate learning materials and resources which are accessible anywhere in the world via the Internet (parents included). They can be used to structure and organise delivery of the curriculum, provide a resource for students to revisit lectures, provide links to useful content in web, audio/video form or provide access to multi-media learning resources. Past papers, mark schemes and subject specific advice relating to universities is also increasingly made available.

The Media and Film departments have experimented with the introduction of Google docs which has an integrated facility for live time collaborative teaching and learning. Any student equipped with widely available IOS devices (iPads, iPhones...) integrate teacher and student learning. Through Zenbe shareflow teachers and students can share research, questions, tasks, links and reminders outside of class-time. This dramatically improves student focus so that they arrive at class with an immediate sense of purpose, ready to participate and learn. Prezi, a powerful animated presentation tool, allows for up to ten participants to collaborate on the creation of a single presentation.



Personal Tutors

The progress of education might be measured by the amount of individual attention each student receives as well as the amount of choice a student has in selecting courses and subjects which they find appealing. Through its system of Personal Tutors Ashbourne aims to be in the forefront of education.

Initially a Personal Tutor will meet students in a group and focus on important academic issues of study skills and management of time. First and foremost, the Personal Tutor will ensure that each student fulfills their academic potential by monitoring their work and performance in examinations. They liaise weekly with teachers and the Director of Studies.

After successful academic work, preparation for university is the Personal Tutor's most important responsibility. Trips to universities are organised and university Admission's Tutors are invited to Ashbourne to meet our students. Dealing with each student individually, the Personal Tutor will ensure that appropriate work experience, reading and research are being done to best prepare a student for their application. The Personal Tutor also encourages students to take advantage of the many clubs, societies and special events that Ashbourne offers.

In their second year, each student will engage with a Personal Tutor on a one-to-one basis to ensure that the most confident application to university is made. Where appropriate, this preparation will include interview practice and preparation for special entry exams such as BMAT and LNAT.



The Personal Tutor provides a vital link with Ashbourne for parents and guardians, which emphasises the importance we place on communication and individual attention. We are proud of the many compliments we have received in the past because of our commitment in this area.



NICK PAYNE-BAADER

Economics, English Literature, Philosophy A, B, D

"Ashbourne places a real premium on freedom, trust and respect; it is not unnecessarily concerned with petty things and trivialities. Students can make their own decisions but trust that there is concern for their well-being and progress. Small classes mean lessons are much more engaging so that you feel your opinions are appreciated. Teachers communicate rather than dictate. Compared to my previous school there is a healthy lack of tension which I really enjoy."

Admissions

Ashbourne aims to attract students with good character and solid academic achievements. The college takes great care with admissions and interviews each applicant. The interview is friendly, informal and without obligation.

A Level Courses

A level students may choose to study for 1 year, 18 months (beginning in January) or 2 years. Each of these longstanding courses has their own specific format; in particular, extra teaching time is allocated for the more intensive courses.

Transfer from AS Level

Having completed their AS levels elsewhere, students are welcome to transfer to Ashbourne to complete their A level studies.



EMMA MARTIN A2 Student

Business, Economics, Geography

Emma achieved A, C, C in her A levels.

"Since joining Ashbourne I have received a lot of help and support with many aspects of my academic life. From revision advice to my UCAS application, I have always found the help I need. Being a retake student I have found this particularly valuable. With the small class sizes I have never felt I have to compete for individual attention. The friendly and relaxed atmosphere also makes Ashbourne a great environment to work in."

Although renowned for its A level programme, the college has 25 successful years of experience at GCSE. Rob Kocho is the able director of this small group and ensures that students are especially well cared for, motivated and, as with all of our students, happy. Students may choose from a one year or two year programme. The first year is organised around the national curriculum so that students study:

- Mathematics and Science (Physics, Chemistry and Biology)
- English Language and Literature
- French or another major European language
- IT
- Humanities (History, Geography and Religious Education)
- PSHE (Personal, Social and Health Education)
- Art and Music
- Drama
- Sports

For their final year (or the single year for one year students) students take both core (compulsory) and optional subjects.

Core subjects: Mathematics, Science, English, another major European language, IT, PSHE, Sports

Optional subjects: Art, History, Geography, Business Studies, Graphics, Photography, Fashion, Music, Drama

Exceptionally talented students may also take up Latin or Classics, timetables permitting.

SUBJECT AVAILABILITY

	GCSE	A LEVEL		GCSE	A LEVEL
Accounting		●	History	●	●
Art and Design	●	●	History of Art		●
Biology	●	●	Information Technology	●	●
Business Studies	●	●	Italian	●	●
Chemistry	●	●	Japanese	●	●
Classical Civilisation		●	Latin	●	●
Computing		●	Law		●
Drama and Theatre Studies	●	●	Mathematics	●	●
Economics		●	Media Studies		●
English Language	●		Music	●	●
English Literature	●	●	Philosophy		●
Fashion and Textiles	●	●	Photography	●	●
Film Studies		●	Physics	●	●
French	●	●	Psychology		●
Further Mathematics		●	Religious Studies	●	●
Geography	●	●	Science		
German	●	●	<i>(combined Phys, Chem, Bio)</i>	●	
Government and Politics		●	Sociology		●
Graphic Design	●	●	Spanish	●	●

Fees

A Level (AS and A2) Courses

Two Year Courses	
Three/four subjects per term	£6,300
One Year and 18 Month Courses	
Three/four subjects per term	£6,300

Exam Fees

AS level per subject	£125
A2 level per subject	£125

GCSE Courses

One Year Courses	
Five or more subjects per term	£6,300
Two Year Courses	
Five or more subjects per term	£6,300

Exam Fees

GCSE per subject	£75
------------------	-----

International Students

International Students per term <i>(applying directly from overseas)</i>	£6,900
---	--------

Accommodation Fees

Accommodation per week	£175 – £275
------------------------	-------------

Additional Fees

Individual Tuition per hour	£75
Registration Fee	£250
Refundable Book Deposit	£200
Practical Fees per subject, per term <i>(for A level students of Fine Art, Graphics, Music, Photography, Textiles, Drama and the Sciences)</i>	£225

Term Dates

September Registration

Monday 3rd Sept to Friday 7th September

Autumn Term

First day of term
Monday 10th September

Half-term
Monday 29th Oct to Friday 2nd November

End of term
Friday 14th December

Spring Term

First day of term
Wednesday 2nd January

Half-term
Monday 18th to Friday 22nd February

End of term
Friday 22nd March

Easter Revision

Week 1
Monday 25th March to Friday 29th March

Week 2
Monday 1st April to Friday 5th April

Week 3
Monday 8th April to Friday 12th April

Summer Term

First day of term
Monday 15th April

There is no half-term or study leave, except for Bank Holidays.

End of term
Friday 31st May

Exams
Monday 3rd to Friday 28th June

AS UCAS Preparation

Monday 10th and Tuesday 11th June

ASHBOURNE STAFF

Principal

Michael Kirby
MSc (London), BApSc (Toronto)
Mathematics, Physics

Director of Studies

John Wilson*
BA (Hons), MA (Oxford), PGCE (Cambridge)
Biology (HoD), Science (HoD)

Director of Operations

Lee Kirby

Assistant Director of Studies

Breanne Grantham*
MA (York), BA Hons, BEd (Queen's University, Ontario),
Diplôme Annuel (Université de la Sorbonne, Paris)
English Literature, English Language, French

Assistant Director of Studies

James Wykes*
BA (Hons) English (Wales), MA (Birkbeck), PGCE
(King's College London)
English Literature, English Language and Drama

Head of GCSE

Rob Kocho
BSc (Sunshine Coast, Australia), BEd
Biology, Science

Teaching Staff

Sabah Bandoui*
BSc, MSc Cognitive Neuropsychology (Oxf. Brookes)
Psychology

Arabella Bridge
BA Hons (Open), PGCE (Sussex)
English Literature (HoD), English Language, Drama

Rupert Browett
BA History (Goldsmiths), CELTA
History, EFL (HoD)

Joanna Budden*
BA History (Leeds), PGCE
History (HoD), Politics (HoD)

Frances Burns
BA Drama (Liverpool)
MA Drama (Ohio)
Drama and English

Brendan Casey
BSc Hons (London School of Economics),
BEd (Greenwich)
Accounts, Business, Economics (HoD)

George Chaldezios
BA Hons, PhD (Cambridge)
Classics, Latin and Greek

Sheila Cosgrove
BA Hons (Chelsea College of Art),
CFA (Ruskin School of Drawing, Oxford University),
BSc Design (University of Cincinnati, USA),
Fashion Illustration (School of Visual Arts, NYC, USA)
Art, Fashion

Jeremy Evans
BSc Hons (Aberystwyth), FSI (City University, London)
Geography (HoD), Business Studies

Louise Forster
BA Hons (Reading)
German and Italian

Peter Franklyn
BA (London School of Economics)
Mathematics, Economics

Dennis Fulcher*
BSc (Kingston), MA (London), PGCE (Greenwich)
Media and Social Sciences (HoD), Psychology,
Sociology, Film, Politics and Law

Odetta Hudson
Licence d'Enseignement des Langues Étrangères (France),
DipLanguage (Denmark)
French (HoD)

Joanna Kay
BA (Camberwell), PGCE
Photography and Art

Eva Koudela
BSc, Phd Mathematics (QMW)
Mathematics

Sanjeev Kumar
BA Accounting (UWL), MSc Finance (Southampton)
Business Studies, Economics, Accounting

Mae Lynne McDougall
MA Hons (Glasgow), MSc (Glasgow Caledonian),
PGCE (Strathclyde)
Business, Economics

Claire Meade

BSc (St Andrews), PhD Molecular Biology (Bath)
Biology, Science

Andrew Miller

BSc, PhD Physics (Exeter)
Mathematics, Physics

Chella Nathan

BSc (Sri Lanka), B.Eng Hons (University of North London),
MA (Open)
Mathematics, Physics

Michael Niman

BA Humanities (Teesside), MA Adult Education (Soton)
Sociology

Sakae Osakabe

Teacher's Training Certificate (Japan)
Japanese

Luca Paci

PhD Philosophy (Wales)
Italian, Philosophy, Media, Film

Michael Peat

BD Hons, DipTheol (London), BSc Hons (Birmingham)
Religious Studies, Mathematics, Philosophy

Lawrence Quigley

BA (Lough), MA (RA), PGCE
Art, History of Art

Alberto Lado Rey

MA (Westminster), Licenciado (Spain),
Teachers' Training Certificate (Spain)
Spanish

Dr Barry Rhule (HoD)

BSc Hons (CNAA), PhD (London)
Mathematics, Physics

Kinzli Russell

BA Hons Chemistry/Mathematics (Belmont, USA)
Chemistry, Mathematics, Science

Wesley Rykalski

BA History, MA Medieval Studies (UCL)
Media Studies

Abdul Sami

BA, MSc (QMW), PhD (Imperial)
Mathematics

Amjad Shah

BSc (Glasgow), BSc (UEL), PGCE
Chemistry and Science

Jak SriTraipop

BA (Silapakorn University, Thailand)
Photography, Graphics

Christopher Todd

BSc Hons (East Anglia), PGCE,
Chemistry (HoD), Science

Jai Virdi

Law (West), PGCE
Law

Emma Walsh

BA (UCL), PGCE
English and English Literature

Michael Wilkinson

MSc Politics (Birkbeck), BA Politics (SOAS)
Politics, Sociology

Kyaw K Win

Internet Engineering (Exeter), PGCE
Computer Science

Examinations Invigilator**Roger Parrott**

BEd Hons (Warwick)

Admissions & Marketing**Shaheena Teeluck**

LLB (Wolverhampton), LLM, LPC

Hannah Martin

BMus (Kings College London)

Christopher Masters

MA (Oxford), MA (Courtauld Inst)

IT Managers**Fabio Carpena**

Warren Coborne

Administrators**Sheetal Meswania**

BSc Chemistry (UCL)

Tahirah Edwards-Byfield

Laura Janowski

Hien Nguyen

Hussein Mittah

HoD - Head of Department

* indicates that the member of staff is a Personal Tutor

ACCREDITATION

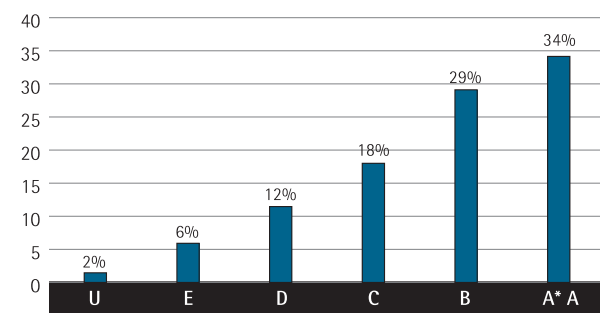
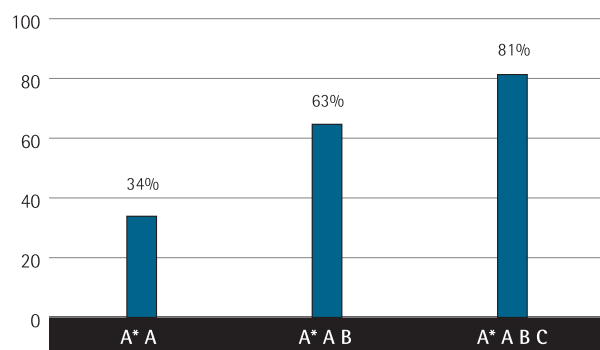
During its most recent inspection in November 2011, Ashbourne received an outstanding report from OFSTED, the Government's inspectorate for education. The college received the highest grading in 6 of the 7 categories assessed. An excerpt from the report follows below and the full report may be accessed through the college's website.

“Ashbourne Independent College provides an outstanding quality of education and meets its aims effectively. As a result of an outstanding curriculum and outstanding teaching the students make outstanding progress. Their spiritual, moral, social and cultural development is outstanding, as is their behaviour. The college has robust procedures for safeguarding. The college has improved since the last inspection and now meets all but one of the regulations for registration. Much of the success is due to the dynamic leadership of the Director of Studies.”

Ashbourne was also one of the first private colleges to achieve HTS (Highly Trusted Sponsor) status from the government body UKBA (United Kingdom Border Agency).



A level 2009 – 2011 (587 exams)



University Destinations

The list below shows the most popular destinations of our A level graduates over the past 5 years.

- University College London (UCL)
- Kingston University
- City University
- King's College London
- Queen Mary and Westfield
- University of Nottingham
- University of Manchester
- Imperial College
- University of Warwick
- Royal Holloway
- London School of Economics (LSE)
- University of Bath

ASHBOURNE

Independent Sixth Form College Kensington



17 Old Court Place, Kensington, London W8 4PL

Telephone +44 (0)20 7937 3858

Facsimile +44 (0)20 7937 2207

E-mail admin@ashbournecollege.co.uk

Website www.ashbournecollege.co.uk