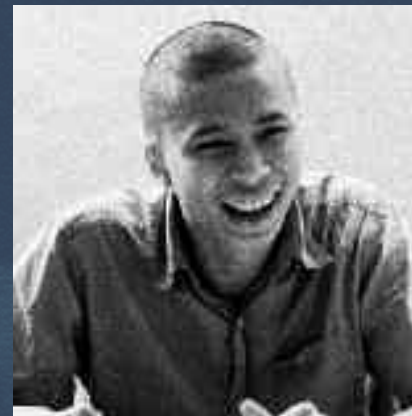


ASHBOURNE

Independent Sixth Form College Kensington



2009 – 2010



Principal

MICHAEL KIRBY

MSc (London), BApSc (Toronto), MInstD

Mike founded Ashbourne College in 1981 and has since presided over its continuing academic development and growth in reputation.

Educated at the Universities of Toronto and London, where he read Aerospace Engineering and Statistics, Mike is a key figure in the promotion of independent education in the UK through bodies such as the Council for Independent Further Education (CIFE) and the British Council Education Counselling Service. He has recently joined the Admissions Panel for Medicine at UCL as a lay member.

Ashbourne is a private, co-educational college for A level, GCSE and preparation for university. Located in one of London's most beautiful areas, it is situated in a quiet street near Kensington Palace and offers spectacular opportunities to explore the myriad cultural attractions of this great city.

It is a college for students who value the best academic traditions of independent education but may have outgrown their current educational environment.

In respecting each student's individuality and independence, Ashbourne offers a radically different approach to education. Class sizes rarely exceed 10 and relations with staff are uncomplicated, informal and often inspiring.

Its exam results have been consistently good. Most importantly, it offers its students the unrestricted freedom to choose from a vast array of interesting and stimulating subjects.



ASHBOURNE COLLEGE





KATHARINE LEA-ROBBINS, A2 Student

*Media Studies, English Language, Drama, Geography,
Religious Studies*

"I can't thank the teachers enough for helping me achieve my grades. I have made many lifelong friends here at Ashbourne and love the relaxed atmosphere. The small classes and intense exam revision all help you feel confident that you will succeed."

| | | | |
|--|---------|-----------------------------|---------|
| Senior Management Team | 6 – 7 | Location, Facilities | 20 – 21 |
| Teaching | 8 – 9 | Accommodation | 22 |
| Individual Attention | 10 – 11 | Beyond the Classroom | 23 |
| In Focus | | Admissions, A Level Courses | 24 |
| Economics, Business Studies, Accounting, Law | 12 | GCSE Courses | 25 |
| Science, Maths, Further Maths, Computing | 13 | Subjects, Fees, Term Dates | 26 – 27 |
| Graphic Design, Photography, Fine Art, Fashion | 14 – 15 | Ashbourne Staff | 28 – 29 |
| Humanities | 16 | Accreditation | 30 |
| Drama and Theatre Studies | 17 | A Level Results | 31 |
| University Entrance | | | |
| An Overview | 18 | | |
| Oxford, Cambridge, Medical School Entrance | 19 | | |

SENIOR MANAGEMENT TEAM



Director of Studies

JOHN WILSON

BA (Hons), MA (Oxford), PGCE (Cambridge)

John was educated at The Queen's College, Oxford and Homerton College, Cambridge. He joined Ashbourne in 2000 as a Biology and Science teacher and is now in his second spell with us, rejoining as Director of Studies in 2005. John is a member of the Institute of Biology and has recently joined the Admissions Panel for Medicine at UCL as a lay member.



Director of Administration

LEE KIRBY

After living and working abroad, Lee has been instrumental in the construction of the college's information systems and databases. A qualified FA coach, he is passionate about football and has played semi-professionally and professionally in the UK and Vietnam, respectively. A former director of an entertainment company, he continues to contribute to our annual talent show, the Ashbourne Revue.



Assistant Director of Studies

BREANNE GRANTHAM

BA Hons, Bed (Queen's University, Canada), MA (York), Diplôme Annuel (Université de la Sorbonne, Paris)

Breanne was educated at Queen's University, Canada and the Sorbonne University in Paris, and holds a Master's degree in English from the University of York. She joined Ashbourne in 2005 as Head of GCSE and is a specialist in English Language and Semiotics. Together with James Wykes, she has inspired students to produce our first college newspaper this year.



Assistant Director of Studies

JAMES WYKES

BA Hons (Wales), MA (Birkbeck) PGCE (King's College London)

Having cut his teeth at two well-known London colleges, James joined us two years ago. Last year he made an outstanding contribution as Head of GCSE and looks likely to exceed that performance in his new role as Director of Studies. He is passionate about learning and plays a key role in the integration of English and Drama. Together with Breanne Grantham, he has inspired students to produce our first college newspaper this year and is now one of the driving forces behind our Annual Christmas Revue.



CALUM WITNEY, A2 Student

Drama, German, English Language

"When I first joined Ashbourne College in January, I arrived from a school with a very traditional background (in fact it was founded by Henry VIII) which I found to be a little archaic. Ashbourne was a breath of fresh air for me. I found that I worked harder and, whilst Ashbourne's teachers were always demanding, they allowed for self-motivation. In my experience I am less inclined to do something with the crack of a slaver's whip behind me.

That said, Ashbourne expects its students to work hard, and the atmosphere at the college encourages work and study. Intertwined with this is a deep and friendly rapport with the teaching staff that I believe could not be compared to any college in the country. It is safe to say that Ashbourne is a superb college with fantastically dedicated staff who are only too happy to sit down with you and talk about any of your interests or concerns."

High Expectations

Engagement

Engagement, interaction, and communication are fundamental to understanding Ashbourne. Class sizes are strictly limited to 10, with an average of 6. This small number enables an outstanding degree of personal attention, allowing teachers to deal with the needs of each student and ensures an animated and productive atmosphere.

Interaction

The key to this process of education is feedback. Teaching small groups of students and with generously allocated teaching time, teachers are able to set and mark vastly more homework than otherwise would be the case.

Supervised Structured Work

In class students are constantly engaged; for example, reviewing homework, asking questions or working on supervised assignments. Progress through any syllabus is energetic but never pressurized.

Exam Confidence

This supervised classwork includes formal mock exams every half term. Past examination questions provide a focus for all tuition. This preparation means that students can approach exams in a relaxed and confident manner.

Subject Choice, Flexibility

Ashbourne offers its A level students a plethora of subjects from which to choose, virtually without restriction. Students are excited and motivated by this freedom to create their own unique timetable.

We are confident that the intersection of timetables promotes encounters between students with different interests and personalities as well as performance and harmony within the college.



VICTORIA YARAMENKO

Economics A, English Literature A, Mathematics B

From the Ukraine by way of Repton School, Vikki joined us to complete her A2 year. She distinguished herself academically and, having taken a gap year to explore opportunities in Finance and Shipping, is now at the university of Bristol reading Economics.

A Personal Approach

Personal Tutors

The Director of Studies leads a team of Personal Tutors. Each week, each student will meet their Personal Tutor who acts as their guide, counsellor, motivator and is the liaison between students, parents and teachers.

Guidance

The Personal Tutors encourage the development of independence, confidence and ambition. As counsellors they are crucial to making a confident application to university and spend much time individually with their appointed students.

Communication

Teachers write reports for each of their students five times each year but, more importantly, report any concerns immediately to our Director of Studies. These reports include comments on homework completion, grades, attendance, effort, ability, punctuality and participation.

Discipline

The high expectations we have for both staff and students have produced excellent exam results. We insist that all assigned work is submitted and, together with our Personal Tutors, the Director of Studies aims to supervise the completion of any outstanding work.

Economics, Business Studies, Accounting, Law

In today's global economy, knowledge of finance, markets or statistics is increasingly important to students who wish to pursue careers relating to banking, accountancy or fund management.

The strength of this department derives from its multi-faceted background and experience. This includes careers outside of teaching in Fund Management and Venture Capital, Chartered Accountancy and Law as well as outstanding academic achievements.

Many of Ashbourne's students have gone on to read Economics, Business or Finance at:

London School of Economics
City University
University College, London
King's College, London
Warwick University
Cambridge University
Oxford University



Teacher of Business and Geography

JERRY EVANS

BSc Hons (Aberystwyth), FSI (City)

Before joining Ashbourne as teacher of Business and Geography, Jerry was a fund manager in the City and a Director of the School of Business Management at the University of Wales. Jerry is passionate about both of his subjects, in particular the relation between Economics and the environment.



UTKU ALHUN

Biology A, Chemistry A, Mathematics A, Physics A

Joining us from Cyprus by way of the United States, Utku was a truly outstanding student, completing four A levels in one year of study. "What sets Ashbourne apart is the high degree of flexibility it offers in helping the students shape their own futures. In a close-knit community that values and encourages diversity, it fosters academic and social self-development, making the transition to university life seem effortlessly smooth. I cannot overemphasise how instrumental Ashbourne was in helping me realise my aspirations."

Science, Mathematics, Further Mathematics, Computing

"Science may set limits to knowledge, but should not set limits to imagination."

Bertrand Russell (1872 – 1970)

Having begun over 25 years ago as a specialist college in Mathematics, Science and Economics, Ashbourne has a long tradition of success in the science subjects.

The qualification of our staff include two degrees from Oxford, four Masters degrees and two Doctorates.

Almost one quarter of our mathematicians study Further Mathematics where our record has been outstanding. In Further Maths over the past three years, 68% of exams were awarded a grade A.



Graphic Design, Photography

YULIYA LIBKINBA

Japanese A, Graphic Design B, Photography B

Coming to us from the Ukraine, Yuliya is currently studying Graphic Design at the London College of Fashion.



Fine Art, Fashion

Art School Entrance

Ashbourne's outstanding reputation in the Fine and Applied Arts has resulted in many successful applicants to the leading art schools. Students benefit from the detailed and specialist advice offered by our Art Department on portfolio presentation and exposure to a wide variety of artistic media.



Humanities

One of our strengths is the depth and breadth of excellence across a vast range of subjects from which, in general, students may choose freely.

English Language

English Literature

Geography

History

Politics

History of Art

Latin

Classics

Arabic

French

German

Italian

Japanese

Spanish

Film Studies

Media Studies

Philosophy

Psychology

Religious Studies

Sociology

ELISHA MANSUROGLU, A2 Student

Drama, English Language, English Literature, Media Studies

"Ashbourne has excellent facilities and location. Its staff ensure each student achieves their full potential, are never too busy to help and are always friendly and supportive."

Drama and Theatre Studies

A student's time is divided between classroom lessons and practical theatre sessions, including six visits to the theatre each year. We combine the academic rigour with the practical and creative demands of the course. As with all subjects at Ashbourne, drama class sizes are deliberately limited to a maximum of ten students; this enables us to give our students the direction, energy and commitment that they deserve.

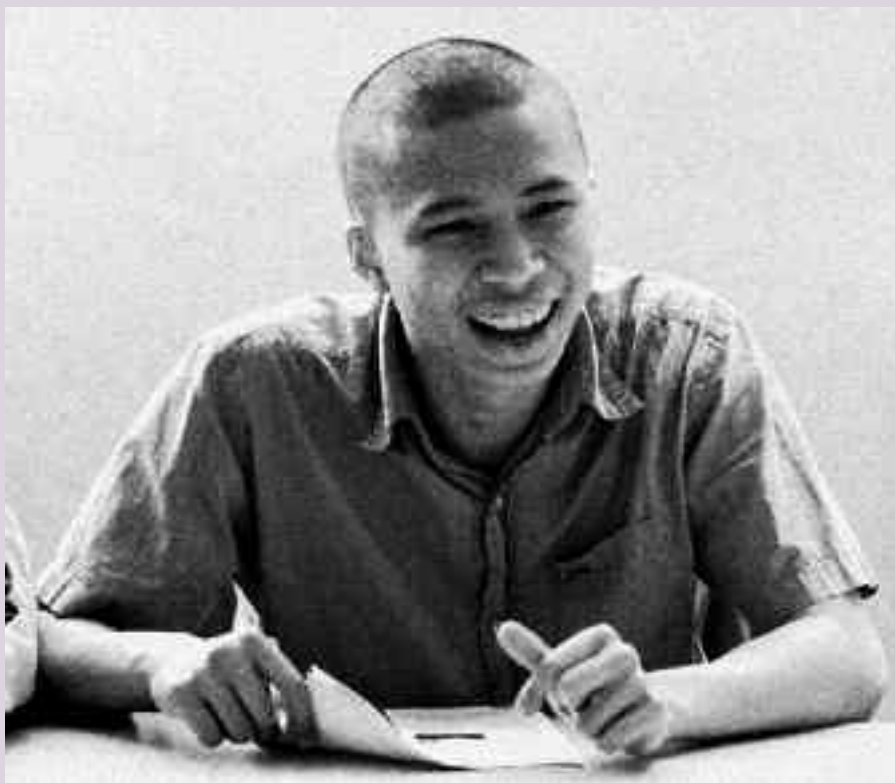
Auditions

The college hosts an annual audition for entry and scholarships for students who wish to study drama as part of their programme at Ashbourne. Each student is asked to prepare a monologue of their own choosing and also, together with two or three other students, perform an excerpt from a piece chosen by the college.

Ashbourne Revue

The drama department has a key role to play with the Revue at Christmas time each year. The Revue includes dance, drama, music and fashion and involves over 50 per cent of the student body.





An Overview

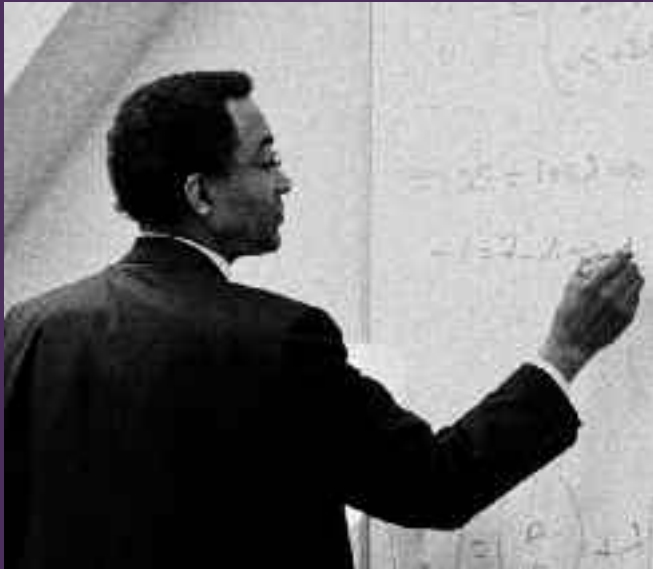
Helping students make a confident application to university is one of the strengths of our Personal Tutor system. Although many go on to the UK's most prestigious institutions such as Oxford, Cambridge, LSE, UCL and Imperial College, our first concern is to understand aspirations and offer appropriate advice. We then hope to guide and encourage students towards universities with appropriate locations, courses and levels of entry.

DUC THONG NGUYEN

Computer Science A, Further Maths A, Maths A, Physics A

One of many outstanding Vietnamese scholars, Thong gained nine perfect scores out of twelve modules in Maths and Further Maths, and won a scholarship to Gonville and Caius College, Cambridge, where he is now studying Engineering.

"Choosing to study at Ashbourne was one of my best decisions because I was so well cared for both academically and personally. This was especially true in preparing for my interview at Cambridge, where I received a lot of help from my Personal Tutor."



Teacher of Mathematics, Further Mathematics and Physics

DR BARRY RHULE

BSc (CNAAB), PhD (London)

"Your experience at Ashbourne will most certainly be informative, but its zenith is educational. To be informed is to be empowered, but to be educated is to be enlightened."

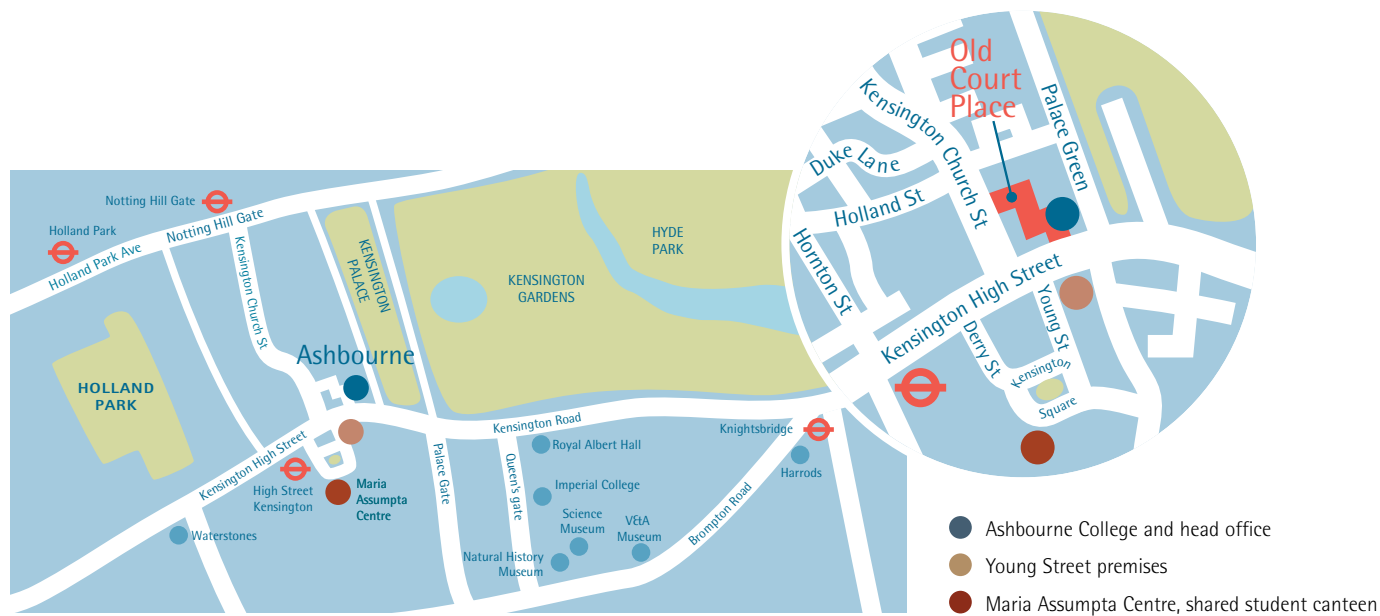
Oxford, Cambridge, Medical School Entrance

Ashbourne's specialist programme for applicants to Oxford, Cambridge, Medicine and other demanding courses and universities builds on many years of impressive results. Students are prepared for the BMAT, UKCAT, and LNAT tests set by Oxford, Cambridge, and Imperial College among others.

Ashbourne is fortunate to be able to draw on the experience of Dr John Foreman who conducts mock interviews for our prospective candidates in the Autumn term. Dr Foreman is a Fellow of the Royal College of Physicians (FRCP), former Professor of Pharmacology and Dean of Students at University College London (UCL).

Director of Studies, John Wilson and Principal, Mike Kirby are lay members of the Admissions Panel for Medicine at UCL.





Ashbourne is fortunate to have a wonderful location in a quiet street close to Kensington Palace and Hyde Park. It benefits from this beautiful natural setting as well as the easy access to such monuments as the Royal Albert Hall and the Victoria and Albert Museum. Many of our students live in nearby hostels or homestays.

Ashbourne's main building at Old Court Place is fully equipped for A level study. In addition to teaching rooms, there is a library with broadband Internet access and a full range of learning resources including many interactive white boards. There are specialist laboratories for the teaching of Science subjects and ICT.

The Media and Film room contains digital video and audio facilities for recording and editing, using state-of-the-art imacs. These facilities enable students to work on creative publishing, graphic design and computer animation projects.

Visual Arts and the GCSE department are housed at our building in Young Street, two minutes' walk from Old Court Place. There are studios for fine art and fashion, graphic design and photography, including a dark room and processing area.

ACCOMMODATION



Our Accommodation Officer endeavours to ensure that students requiring accommodation during their time at Ashbourne have a 'home from home' most appropriate to their individual requirements. Essentially there are two types of accommodation from which to choose:

- Student hostels
- Boarding with an approved family

The College has long-established relationships with several local student hostels. Most are situated in quiet, residential neighbourhoods with wardens on hand 24 hours a day. In most cases, two students will share a room, although single rooms are available for those booking well in advance. Rooms are generally equipped with a desk, chair, study-lamp and generous wardrobe space. Laundry facilities are usually provided, as well as breakfast and evening meals. Kensington, Notting Hill and Holland Park offer students a diverse range of eating establishments, catering for every taste and budget.

Homestays will appeal to those who wish to experience family life. All accommodation is fully inspected before it is offered to students and is within walking distance or an easy journey by bus or train from Ashbourne.

Cultural visit to Europe

Every year, the College visits a major European city during the Spring half-term in order to enhance students' appreciation of the European cultural heritage of art, architecture, music and drama. In recent years, the college has visited Rome, Amsterdam, Barcelona and Madrid.

Ashbourne Revue

The annual Revue is a highlight of Ashbourne's year, with our students working together to produce a varied and exciting programme.

Sports and Activities

Ashbourne has always had an enthusiastic commitment to football and, as well as organizing 5-a-side matches with other colleges, sets aside one afternoon each week for football. Other activities include: Basketball, Running, Martial Arts and Yoga.

The college also has excellent clubs for Music, Chess and Drama.





NICK PAYNE-BAADER A2 Student

Classics, English Literature, Philosophy

"Ashbourne places a real premium on freedom, trust and respect; it is not unnecessarily concerned with petty things and trivialities. Students can make their own decisions but trust that there is concern for their well-being and progress. Small classes mean lessons are much more engaging so that you feel your opinions are appreciated. Teachers communicate rather than dictate. Compared to my previous school there is a healthy lack of tension which I really enjoy."

Admissions

Ashbourne aims to attract students with good character and solid academic achievements. It takes great care with admissions and interviews each applicant. The interview is friendly, informal and without obligation.

A Level Courses

There are a variety of A level courses – one term, one year, eighteen months and two years.

Transfer from AS Level

Having completed their AS levels elsewhere, students are welcome to transfer to Ashbourne to complete their A level studies.



EMMA MARTIN A2 Student

Business, Economics, Geography

"Since joining Ashbourne I have received a lot of help and support with many aspects of my academic life. From revision advice to my UCAS application, I have always found the help I need. Being a retake student I have found this particularly valuable. With the small class sizes I have never felt I have to compete for individual attention. The friendly and relaxed atmosphere also makes Ashbourne a great environment to work in."

At GCSE we offer both a two year course and an intensive one year course. The one year course is self-contained and covers all relevant theory and coursework.

Aside from their studies, GCSE students enjoy an exciting programme of activities, including sports, visits to the theatre and London's superb museums.

Ashbourne takes great care with its GCSE students who are much more strictly supervised than our A level students. In particular we are keen to advise and encourage them to think about their A level choices.

SUBJECT AVAILABILITY

| | GCSE | A LEVEL | | GCSE | A LEVEL |
|---------------------------|------|---------|--|------|---------|
| Accounting | | ● | Graphic Design | ● | ● |
| Arabic | ● | ● | History | ● | ● |
| Art and Design | ● | ● | History of Art | | ● |
| Biology | ● | ● | Information Technology | ● | ● |
| Business Studies | ● | ● | Italian | | ● |
| Chemistry | ● | ● | Japanese | ● | ● |
| Classical Civilisation | | ● | Latin | ● | ● |
| Computing | | ● | Law | | ● |
| Drama and Theatre Studies | | ● | Mathematics | ● | ● |
| Economics | | ● | Media Studies | | ● |
| English Language | ● | ● | Philosophy | | ● |
| English Literature | ● | ● | Photography | ● | ● |
| Fashion and Textiles | ● | ● | Physics | ● | ● |
| Film Studies | | ● | Psychology | | ● |
| French | ● | ● | Religious Studies | ● | ● |
| Further Mathematics | | ● | Science <i>(Single subjects/Dual Award)</i> | ● | |
| Geography | ● | ● | Sociology | | ● |
| German | ● | ● | Spanish | ● | ● |
| Government and Politics | | ● | | | |

Fees 2009 – 2010

A Level (AS and A2) Courses

| | |
|------------------------------------|-------|
| Two Year Courses | |
| Three/four subjects per term | £5700 |
| One Year and 18 Month Courses | |
| Three/four subjects per term | £5700 |
| January Resit Students per subject | £2750 |

GCSE Courses

| | |
|--------------------------------|-------|
| One Year Courses | |
| Five or more subjects per term | £5700 |
| Two Year Courses | |
| Five or more subjects per term | £5700 |

International Students

| | |
|---|-------|
| International Students per term <i>(applying directly from overseas)</i> | £6200 |
|---|-------|

Accommodation Fees

| | |
|------------------------|-------------|
| Accommodation per week | £125 – £225 |
|------------------------|-------------|

Additional Fees

| | |
|--|------|
| Individual Tuition per hour | £75 |
| Registration Fee | £250 |
| Refundable Book Deposit | £150 |
| Practical Fees per subject, per term <i>(For AS and A2 students of Fine Art, Fashion, Photography, Graphics and Drama and A2 Science students.)</i> | £200 |

Term Dates

August Registration

Monday August 31st to Friday 4th
September 2009

Autumn Term

First day of term
Monday 7th September 2009

Half-term
Monday 26th to Friday 30th October 2009

End of term
Friday 18th December 2009

Spring Term

First day of term
Monday 4th January 2010

Half-term
Monday 15th to Friday 19th February 2010

End of term
Friday 26th March 2010

Easter Revision

Week 1
Monday 29th March to Friday 2nd April
2010

Week 2
Monday 5th to Friday 9th April 2010

Week 3
Monday 12th to Friday 16th April 2010

Summer Term

First day of term
Monday 19th April 2010

There is no half-term or study leave, except for Bank Holidays.

End of term
Friday 28th May 2010

Exams
Monday 31st May to Friday 25th June

AS UCAS Preparation

Monday 14th and Tuesday 15th June

ASHBOURNE STAFF

Principal

Michael Kirby

MSc (London), BAPSc (Toronto), MInstD
Mathematics, Physics

Director of Studies

John Wilson*

BA (Hons), MA (Oxford), PGCE (Cambridge)
Biology (HoD), Science (HoD)

Director of Administration

Lee Kirby

Assistant Director of Studies

Breanne Grantham*

MA (York), BA Hons, BEd (Queen's University, Ontario),
Diplôme Annuel (Université de la Sorbonne, Paris)
English Literature, English Language, French

Assistant Director of Studies

James Wykes*

BA English (Wales) MA (Birbeck), PGCE (King's College London)
English Literature, English Language and Drama

Head of GCSE

Rachel Wilson

BSc Biochemical Sciences (King's College)
Biology and Science

Teaching Staff

Dr Marcus Appleby

BA Hons (Oxford), PhD (London)
Mathematics, Physics

Amy Bacon

BA History of Art with
English Literature, PGCE (Kent)
History of Art, Photography

John Baker

BA (London)
Accounts, Business

Arabella Bridge*

BA Hons (Open), PGCE (Sussex)
English Literature (HoD), English Language, Drama

Rupert Browett

BA Hons (London)
History, EFL (HoD)

Joanna Budden

BA (Leeds)
History (HoD), Politics (HoD)

Brendan Casey

BSc Hons (London School of Economics),
BEd (Greenwich)
Accounts, Business, Economics (HoD)

George Chaldezios

BA Hons, PhD (Cambridge)
Classics, Latin and Greek

Kinzli Coffman

BA Hons Chemistry/Mathematics (Belmont, USA)
Chemistry, Mathematics, Science

Sheila Cosgrove

BA Hons (Chelsea College of Art),
CFA (Ruskin School of Drawing, Oxford University),
BSc Design (University of Cincinnati, USA),
Fashion Illustration (School of Visual Arts, NYC, USA)
Art, Fashion

Robert Crumpton

BA Hons, Modern History and English (Oxford) MA, English
(King's College London). BA Acting (Weber Douglas Academy)
English Literature, English Language and Drama

Tim Dean

BA Hons (St Martin's College), PGCE
Art, Graphics, Photography

Jeremy Evans

BSc Hons (Aberystwyth), FSI (City University, London)
Geography (HoD), Business Studies

Gina Fiori*

Catholic University of Chile Art College, Santiago (Chile),
St Luke Art School, Bruxelles (Belgium),
BA Hons (Beaux Arts, Bruxelles)
Art and Design (HoD)

Louise Forster

BA Hons (Reading)
German and Italian

Dennis Fulcher

BSc (Kingston), MA (London), PGCE (Greenwich)
Media and Social Sciences (HoD), Psychology,
Sociology, Film, Politics and Law

Odette Hudson

Licence d'Enseignement des Langues Étrangères (France),
DiplLanguage (Denmark)
French (HoD)

David Johnstone

BSc Artificial Intelligence,
PhD Computing (Durham)
Computing, IT, Mathematics

Mae Lynne McDougall

MA Hons (Glasgow), MSc (Glasgow Caledonian),
PGCE (Strathclyde)
Business, Economics

Edward Morris

BSc Hons (Bristol), BA Hons, MA (Open)
Mathematics (HoD)

Chella Nathan

BSc (Sri Lanka), B.Eng Hons (University of North London),
MA (Open), Mathematics, Physics

Sakae Osakabe

Teacher's Training Certificate (Japan)
Japanese

Elizabeth Parks

BMus (Birmingham)
Music

Michael Peat

BD Hons, DipTheol (London),
BSc Hons (Birmingham)
Religious Studies, Mathematics, Philosophy

Alberto Lado Rey

MA (Westminster), Licenciado (Spain),
Teachers' Training Certificate (Spain)
Spanish

Dr Barry Rhule

BSc Hons (CNA), PhD (London)
Mathematics, Physics

Wesley Rykalski

BA History, MA Medieval Studies (UCL)
Media Studies

Jak Sritraipop

BA (Silapakorn University, Thailand)
Photography, Graphics

Christopher Todd

BSc Hons (East Anglia), PGCE
Chemistry (HoD), Science

Pauline Vickers

BSc Hons (Bristol), CertEd (Newcastle)
Biology, Science

Examinations Invigilator

Roger Parrott

BEd Hons (Warwick)

Admissions

Shaheena Teeluck

LLB (Wolverhampton), LLM, LPC

IT Managers

Gino Moodley

Fabio Carpena

Amin Rashid

BSc Business Information Systems (Middlesex)

Administrators

Emily Boothroyd

BA Social Anthropology (Kent)

Andrea Fernandez

BSc Hons Medical Biochemistry (King's College, London)

Hannah Martin

BMus (King's College, London)

HoD - Head of Department

* indicates that the member of staff is a Personal Tutor

ACCREDITATION

The British Accreditation Council, the accrediting body for the British Council, has inspected and accredited since 1992. Some extracts from the recent report in 2005 are:

There are two specialist technology areas – a modern computer suite and an excellent Multi-Media Centre, equipped with high specification Apple computers, a good range of software (including Filemaker Pro) and video/data projection.

Timetabling and other aspects of academic administration were handled with great efficiency, and the inspectors considered that the relatively small administrative team provided excellent support to the academic and pastoral work of the College.

Work in arts and humanities subjects was marked by imaginative teaching which involved the students in very willing active participation.

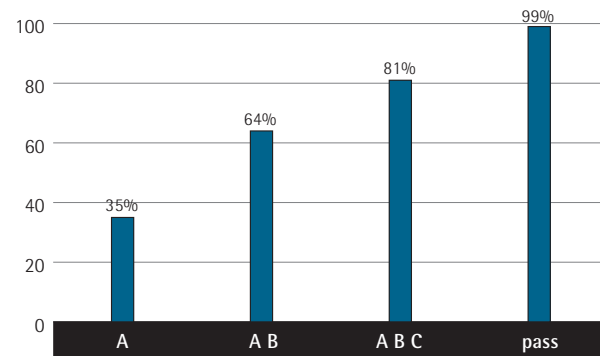
The College has a very active social programme including a College Revue, sports and an annual trip abroad.

Work produced in the Art Centre was outstanding in both its quality and the range of media used.

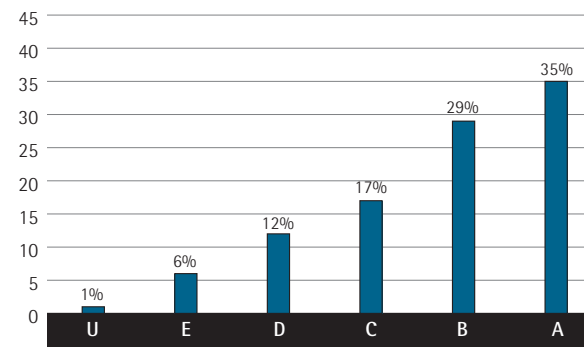
Twenty-four classes were observed, involving twenty-one teachers. Almost without exception the classes were of a very good or excellent standard.

Students were extremely positive in their assessment of the teaching they received at the College, in relation both to the classroom activities and to the help they were given outside the classroom.

All candidates 2006 – 2008 (447 exams)

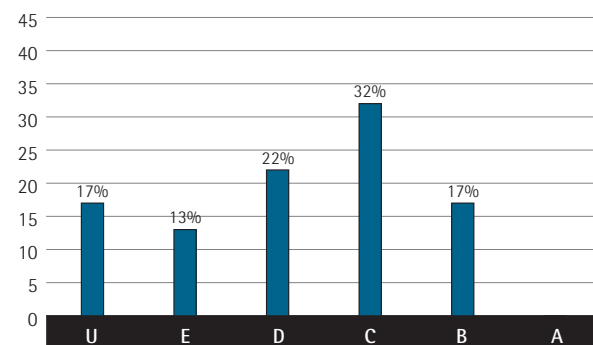


All candidates 2006 – 2008 (447 exams)

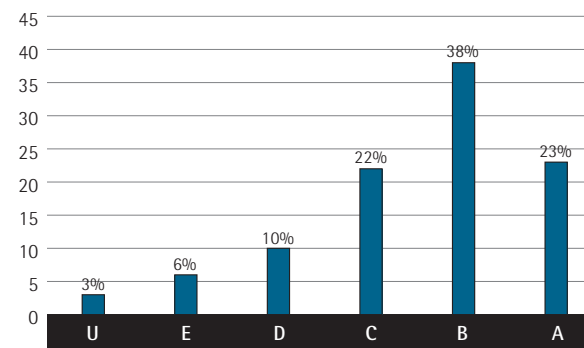


Distribution of A Level grades 1998 – 2008 resit candidates (221 exams)

Incoming grades



Outgoing grades





17 Old Court Place, Kensington, London W8 4PL

Telephone +44 (0)20 7937 3858

Facsimile +44 (0)20 7937 2207

E-mail admin@ashbournecollege.co.uk

Website www.ashbournecollege.co.uk