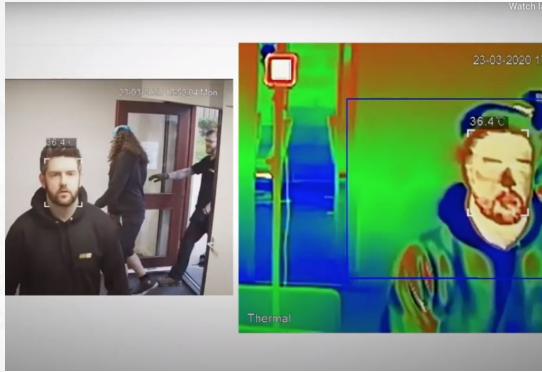


Premises Updates for September 2020

Changes to Ashbourne's Environment

Thermal Imaging Cameras



- ❑ To be installed at entrances to all three premises
- ❑ Detects anyone with an abnormally high temperature
- ❑ The Reception Team will be alerted
- ❑ A member of staff will use a temperature checking device to follow-up
- ❑ Individuals with a confirmed high temperature will need to leave the College premises

Changes to Ashbourne's Environment

Personal Temperature Checks



- ❏ We are encouraging all students and staff to purchase temperature checking equipment.
- ❏ Quick and easy to use
- ❏ Will help to reduce the risk of infection

Changes to Ashbourne's Environment

Hands Free Entry - Doors



- ❑ Doors to remain open during classes
- ❑ Doors will automatically close when Fire Alarm is triggered to meet Fire Regulations
- ❑ Leader of lesson/meeting is in charge of opening and shutting door

Changes to Ashbourne's Environment

Hands Free Entry - ID Card

All staff and students will get an upgraded lanyard with a hook which will allow users to:

- ❑ Open doors without the use of their hands
- ❑ Enter building entry codes without the use of their hands



Changes to Ashbourne's Environment

Cleaning - Hand Sanitiser



- ❑ To be installed at entrances to all three premises
- ❑ To be installed outside all classrooms, offices and corridors
- ❑ They dispense a hand sanitising solution so that we can help prevent the spread of COVID-19
- ❑ Automatically dispenses liquid without the need to press anything

Changes to Ashbourne's Environment

Cleaning - General Cleaning



- ❑ An additional clean each lunchtime
- ❑ A professional deep clean will take place prior to reopening
- ❑ All deliveries cleaned before opening

Changes to Ashbourne's Environment

Changes to Classrooms - tables



- ❑ Smaller Tables to allow for social distancing
- ❑ One table per person in each classroom
- ❑ We will still be able to accommodate up to 8 students for most classrooms
- ❑ Tables will face forwards in line with government recommendations

Changes to Ashbourne's Environment

Changes to Classrooms - Audio/Visual

We are looking into ways that we can improve things such as:

- ❑ Quality of cameras
- ❑ Projector/whiteboards
- ❑ Quality of microphones
- ❑ Glare on boards
- ❑ Other areas (e.g. visualisers for Art Department)

Changes to Ashbourne's Environment

Cleaning - Washing hands



- ❑ Everyone is encouraged to wash their hands for at least 20 seconds on a frequent basis
- ❑ Signs around Ashbourne to remind individuals of recommended hand washing technique

Changes to Ashbourne's Environment

Common Areas/Shared Materials

- ❑ Removal of computers from common areas
- ❑ Removal of shared printers for students - send printing requests to the Reception Team instead
- ❑ Removal of water machines
- ❑ No longer issuing late cards
- ❑ Consideration given to sending PDF versions of books

Changes to Ashbourne's Environment

Masks



- ❑ Advice may change
- ❑ Masks are not mandatory for staff and students
- ❑ We encourage usage
- ❑ You can wear anywhere in the College
- ❑ Masks are mandatory for visitors
- ❑ Face shields/gloves are permitted

**For more details, please contact our
Admissions Department**

admissions@ashbournecollege.co.uk

020 3920 8904